

# INFORMATION ONLY

## XTROL 7/4

### Explosion Proof Housing for 'trol Products

#### Features:

- Compatible with all Standard Size "trol" and "SUPERtrol" Family of Products
- Meets NEMA 3, 4, 7, 9 Specs.
- For use in Class 1, Division 1, Groups C & D
- For use in Class 2 & 3, Division 1, Groups E, F & G
- FM, CSA Listed Enclosure
- Specials Available for Custom Conduit Entries

#### Specifications:

This housing is designed and manufactured in compliance with FM Standards 3600 & 3615 and CSA Standard C22.2 No. 30-M1986 for use in Class I, Division I, Groups C & D and Class II an III, Division I, Groups E, F & G hazardous locations. The encluse is **certified by:**

#### ADALET

FM (file# JI 0V2A6.AE)

CSA (file # LR36172).

It is made from cast aluminum and sealed to meet NEMA 7 and 4 specifications. This is accomplished by Buna-N o-ring gaskets retained in machined grooves in the covers and buttons.

The front button actuators have the same easy-to-use keypad layout that has become the trademark of the KEP "trol" and "SUPERtrol" series. 6 blind threaded holes are provided for mounting with 2 each 1/2" NPT openings for wiring.

To install a unit, the 16 front 3/16" allen screws must be removed and the "trol" mounted in the sub panel provided.

If the assembly option is ordered, only the 8 back cap screws need to be removed to complete the wiring to an optional pluggable connector.

Empty weight is 26 lbs.

#### Enclosure Certifications

Class I, Groups C & D

Class II, Groups E, F, & G

Class III

NEMA 4, 7CD, 9EFG

FM Standard 3615

CSA Standard C22.2 No. 30



#### XTROL 7/4\*

Example: XTROL7/4 BT2 A

Series: \_\_\_\_\_

XTROL7/4 (housing only)

Mounting Hardware: \_\_\_\_\_  
(Includes labels and two piece connector)

BT2 = BATCHtrol II

MB = MASSbatch

FLO = FLOWtrol

KFC = KEPtrol F/C

KP8 = KEPtrol

**CONTROLLERS SOLD SEPARATELY**

KRT = KEPtrol R/T

MFC = Mass Flow Computer

DPFC = DPFC

ST1\*\* = SUPERtrol-I

ST1LE\*\* = SUPERtrol-I LE

ST2\*\* = SUPERtrol-II

LT2\*\* = LEVELtrol-II

X = No Mounting Hardware

Assembly By KEP: \_\_\_\_\_

A = Assembled by KEP

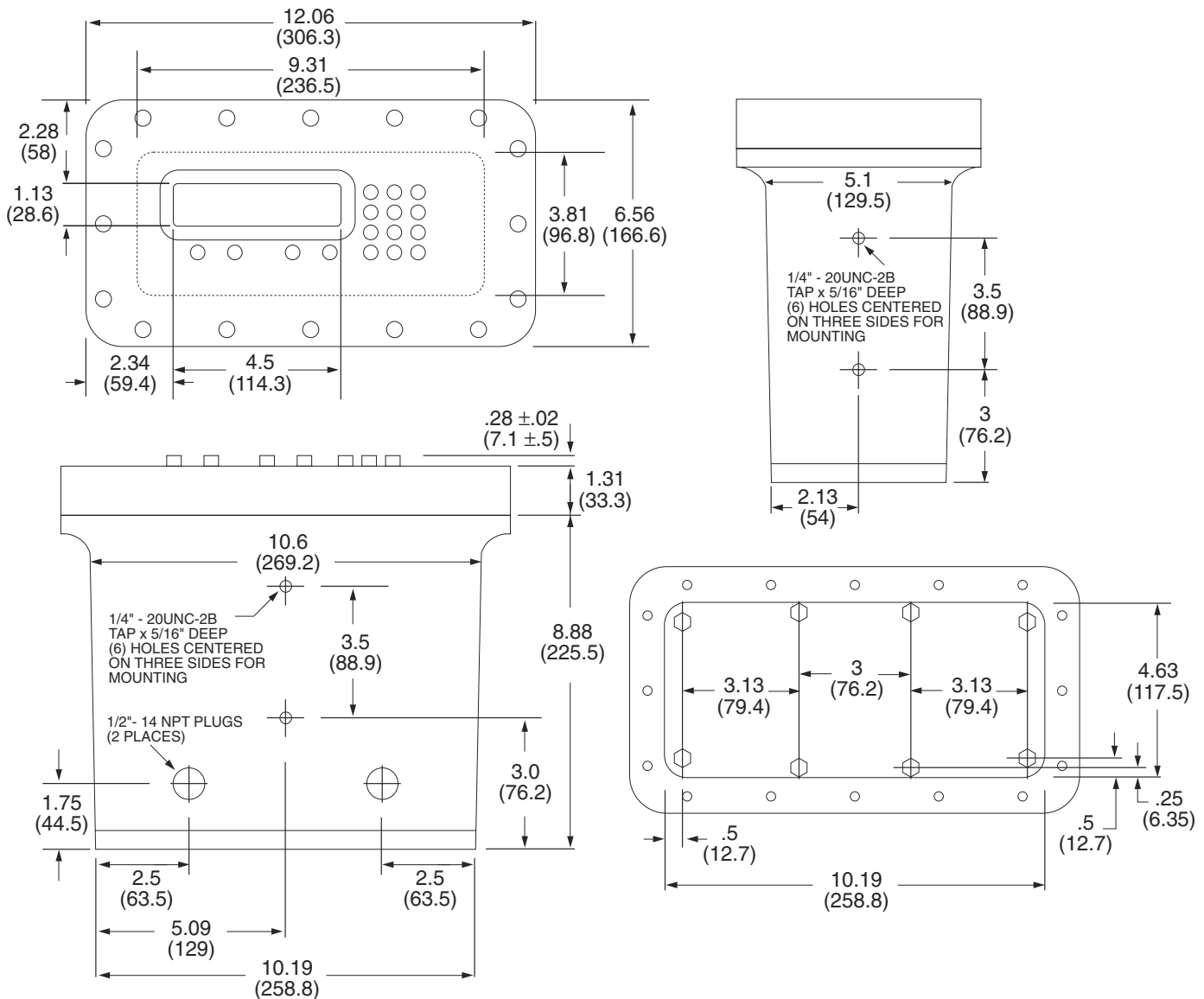
X = No Assembly

**Note:** When placing the order, the unit part number directly following the XTROL part number on the Purchase Order is the one that will be assembled into the XTROL housing.

\*\* See also XHV series enclosure.

# INFORMATION ONLY

## XTROL 7/4 Dimensions:



### Assembly:

If HOUSING ONLY is purchased, all front allen screws and front must be removed. Remove four allen screws so that the 'trol product can be mounted in the internal bracket (gasket not used; top of bracket is the thinner side). Wiring should be done before installing 'trol in the housing unless the MOUNTING HARDWARE with two piece connector is purchased. If the unit is assembled by KEP, only remove the back plate. The pluggable connector can be wired at back.