



G SERIES ANSI FLANGE FITTING (PRECISION TURBINE METERS)

The G Series High Precision Meter is the most accurate of all the FLOMEC® Turbine Meters:

FEATURES / BENEFITS

- Meter includes a traditional design
- Available in a variety of sizes
- High Temperature model available

APPLICATIONS

- | | |
|----------------------------------------------|----------------------------------|
| • Fuel | • Process Control |
| • Batching | • Chemical Feed Lines |
| • Food & Beverage | • Irrigation |
| • Petro Chemicals | • High Water Volume Mixing |
| • Pharmaceuticals | • High Precision / High Pressure |
| • Thin Viscosity Fluids Under 100 Centipoise | |

APPROVALS



PRODUCT CONFIGURATION

PRODUCT IDENTIFIER **1**

G = G Series Precision Turbine Meter

FITTING TYPE **2**

F = Flanged

SHAFT / SLEEVE BEARING / THRUST BEARING **3**

T = Tungsten Carbide / Tungsten Carbide / Tungsten Carbide

P = Stainless Steel / PTFE / Stainless Steel (No High Temp available)

TURBINE SIZE & FLOWRATE **4**

-075S = 3/4 in. Standard

-075H = 3/4 in. High Temp - Turbine Body Only*

-075E = 3/4 in. Ext-Range

-75EH = 3/4 in. Ext-Range High Temp - Turbine Body Only*

-100S = 1 in. Standard

-100H = 1 in. High Temp - Turbine Body Only*

-150S = 1-1/2 in. Standard

-150H = 1-1/2 in. High Temp - Turbine Body Only*

-200S = 2 in. Standard

-200H = 2 in. High Temp - Turbine Body Only*

-300S = 3 in. Standard

*Call GPI for Sensor & Electronics

SENSOR CHOICE **5**

2 = Standard Sensor with 12 inch Lead Wires

X = No Sensor - Turbine Body Only

ELECTRONIC CHOICE (LOCAL) **6**

Turbine Mounted

-5 = GG510 - Standard Display

-6 = GX510 - 4-20 mA Transmitter with Display

-7 = GA510 - 4-20 mA Transmitter

-8 = SC510 - Scaled Pulse Output

-X = No Electronics - Turbine Body Only

1 2 3 4 5 6
 --->>>> **G + F + T + -075S + 2 + -6 = SAMPLE**

SPECIFICATIONS

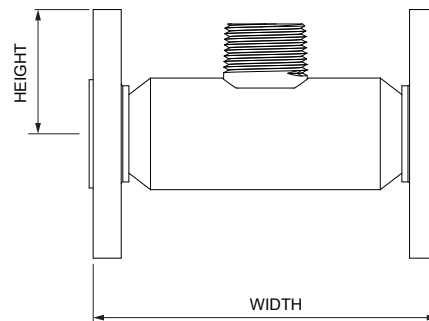
Design Type:	Turbine		
Fitting Type:	150# RF ANSI Flange		
Housing Material:	316 Stainless Steel		
Meter Sizes Available:			
For GFT	3/4" 1" 1-1/2" 2" 3"		
For GFP:	3/4" 1" 1-1/2" 2" -		
For High Temperature:	3/4" 1" 1-1/2" 2" -		
Flow Range:	3/4" (075)	1.6 - 16 GPM	(6.0 - 60 LPM)
	3/4" (075E)	2.3 - 23 GPM	(8.7 - 87 LPM)
	1" (100)	6.7 - 67 GPM	(25.2 - 252 LPM)
	1-1/2"(150)	17.7 - 177 GPM	(67 - 670 LPM)
	2" (200)	33 - 330 GPM	(125 - 1250 LPM)
	3" (300)	60 - 600 GPM	(227.1 - 2271 LPM)
Accuracy (Linearity):	± 0.5%		
Repeatability:	± 0.1%		
Pressure Rating:	Flange Rule		
Operating Temperature Range:			
For Tungsten Carbide:	-450° F to +800° F (-268° C to +426° C)		
For SS/PTFE:	-100° F to +225° F (-74° C to +107° C)		
Typical K-Factor:	3/4" (075)	3,750 PPG / 991 PPL	
	3/4" (075E)	2,608 PPG / 689 PPL	
	1" (100)	896 PPG / 237 PPL	
	1-1/2"(150)	340 PPG / 90 PPL	
	2" (200)	181 PPG / 48 PPL	
	3" (300)	50 PPG / 13 PPL	

Wetted Materials:	Housing:	316 Stainless Steel
	Sleeve Bearings:	GFT - Tungsten Carbide GFP - PTFE
	Thrust Bearing:	GFT - Tungsten Carbide GFP - 440C Stainless Steel
	Shaft:	GFT - Tungsten Carbide GFP - 316 Stainless Steel
	Rotor:	CD4MCu Stainless Steel
	Rotor Supports:	316 Stainless Steel
	Retaining Rings:	300 Series Stainless Steel
Recommended Strainer Size:		
	3/4 inch	40 mesh
	1 inch	40 mesh
	1-1/2 inch	18 mesh
	2 inch	14 mesh
	3 inch	14 mesh
Frequency Output:	3/4" (075)	100 - 1000 Hz
	1" (100)	100 - 1000 Hz
	1-1/2"(150)	100 - 1000 Hz
	2" (200)	100 - 1000 Hz
	3" (300)	50 - 500 Hz
Calibration Report:	Comes standard with G Series meters. N.I.S.T. - Certification available.	

DIMENSIONS

Meter Size	Length (mm)	Height (mm)	Meter Size	Length (mm)	Height (mm)
3/4"	5.50 (140)	1.94 (49)	2"	6.50 (165)	3.00 (76)
1"	5.50 (140)	2.12 (54)	3"	10.00 (254)	3.75 (95)
1-1/2"	6.00 (152)	2.50 (63)			

* Height on flange meters, measures from center line to top of flange.



ACCESSORIES / ELECTRONICS

Part No.	Description
80001100	X-Proof Enclosure
80001101	Weather proof enclosure - Zinc
80001102	X-Proof enclosure with Terminal Strip
80001105	Weather proof Enclosure - SS
GA500	4-20 mA Transmitter - Remote
GA510	4-20 mA Transmitter - Local
GG500-M	Display with pulse out - Remote
GG510-M	Display with pulse out - Local
GX500-M	Display with 4-20 mA Transmitter - Remote

Part No.	Description
GX510-M	Display with 4-20 mA Transmitter - Local
SC500	Scaled Pulse Unit - Remote
SC510	Scaled Pulse Unit - Local
E112	Explosion-proof Display - Local
F Series (F116/F118/F126/F130)	Remote Panel Mount Electronics
N410	Deluxe Batch Controller

Service & Warranty: For technical assistance, warranty replacement or repair contact your **FLOMEC®** or **GPI®** distributor: In North or South America: **888-996-3837 / GPI.net**
Outside North or South America: **+61 2 9540 4433 / flomec.com.au**

Wichita · Sydney · Mexico City

GREAT PLAINS INDUSTRIES **GPI**