



# PROREAD™ REGISTER



ProRead™ Pit Set

ProRead™ Inside Set

Neptune water meters and absolute encoders form the foundation of accurate and reliable ARB® Utility Management Systems™. Since 1964 when Neptune introduced the first absolute encoder, Neptune has held firm to the philosophy that both the local visual reading and remote electronic reading should come from the same source. Today there are more than 20 million encoders in use. Neptune guarantees the data integrity of all our absolute encoders.

The ProRead™ (ARB® VI) absolute encoder provides data integrity by encoding the actual position of the register odometer and providing error-free remote electronic meter reading capability. The ProRead encoder allows utilities to capture more reads per day, shorten billing cycles, and automate bill preparation to improve cash flow. The ProRead absolute encoder and data collection systems work together to eliminate billing discrepancies and customer complaints by providing accurate meter readings the first time, every time – guaranteeing efficiency, long-term value, and peace of mind for utilities.

ProRead is the first step toward a totally automated metering system. The ProRead register provides the actual direct reading of the register odometer and provides error-free remote electronic capability without the need for batteries. The ProRead is a fully programmable register with an ID number of up to 10 digits, three user characters, 3-6 digit meter reading and meter networking to allow connection of two registers to one remote. For reading convenience, the register can be mounted in one of four different positions on the meter bayonet. For ease of installation, the ProRead register can automatically detect 2-wire and 3-wire register protocol without programming.

### PROREAD INSIDE SET VERSION

The inside set version features a non-oil-filled, standard plastic polycarbonate enclosure for installation in basement or inside applications only.

### PROREAD PIT SET VERSION

The pit set version features a non-oil-filled, roll-sealed copper shell and glass lens housing similar to our standard direct read register housing for superior protection in a harsh pit environment.

## KEY FEATURES

- Absolute encoder technology
- Available in pit and inside set versions
- Pit set version: Roll-sealed copper shell and glass lens, oil-free design, factory pre-wired and potted
- Inside set version: Plastic enclosure, oil-free design
- Error-free remote electronic reading
- Automatically detects 2-wire and 3-wire register protocol
- Reprogrammable 1-10 digit ID, 3-6 digit meter reading
- Full sweep hand for testing
- Leak detection on register face
- Tamperproof seal to meter

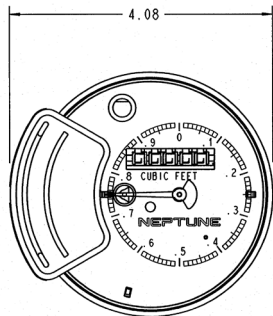
## KEY BENEFITS

- Foundation of AMR
- Accurate and reliable meter reading
- Eliminates billing discrepancies and customer complaints
- Allows the capture of more reads per day
- Shortens billing cycle
- Automates bill preparation to improve cash flow

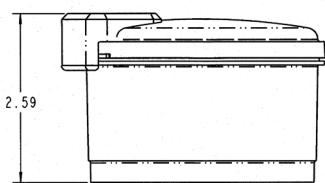
**REGISTRATIONS AND REGISTER CAPACITY:**

4-and 6-Wheel Encoded Odometer									
Meter Size	Gallons (U.S. & Imperial)			Cubic Feet (ft <sup>3</sup> )			Cubic Meters (m <sup>3</sup> )		
	4 Wheel	6 Wheel	Fixed-Zero	4 Wheel	6 Wheel	Fixed-Zero	4 Wheel	6 Wheel	Fixed-Zero
5/8", 3/4", 1"	1234	123455	0	1234	123455		1234	123455	-
1 1/2"	1234	123455	00	1234	123455	0	1234	123455	-
2", 3", 4"	1234	123455	00	1234	123455	0	1234	123455	-
6", 8", 10", 12"	1234	123455	000	1234	123455	00	1234	123455	0
16", 20"	1234	123455	0000	1234	123455	000	1234	123455	0 0

**INSIDE SET VERSION**

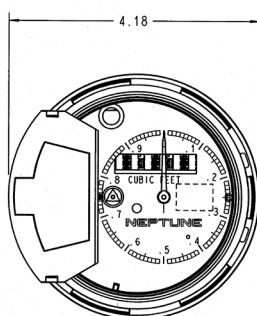


TOP VIEW

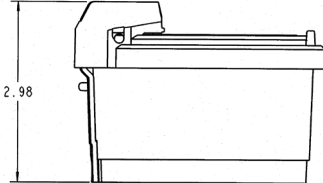


SIDE VIEW

**PIT SET VERSION**



TOP VIEW



SIDE VIEW

Neptune Technology Group Inc.  
1600 Alabama Highway 229  
Tallahassee, AL 36078  
USA  
Tel: (800) 633-8754  
Fax: (334) 283-7293

Neptune Technology Group (Canada) Ltd.  
7275 West Credit Avenue  
Mississauga, Ontario  
L5N 5M9  
Canada  
Tel: (905) 858-4211  
Fax: (905) 858-0428

Neptune Technology Group Inc.  
Ejército Nacional No. 418  
Piso 12, Desp. 1201-1202  
Col. Chapultepec Morales  
Delegación Miguel Hidalgo  
11570 México, Distrito Federal  
Tel: (525) 55203 5294 / (525) 55203 5708  
Fax: (525) 55203 6503



**SPECIFICATIONS**

- Materials
  - Inside set housing: Polycarbonate
  - Pit set housing: Copper shell and glass lens
  - Connecting wire: 3-lead #22 AWG
  - Remote receptacles: ABS, nylon, and polycarbonate
- Distance
  - A single register may be located with up to 500 feet (152 m) of wire from receptacle or MIU.
  - Two networked registers can be located with up to 300 feet (91m) of wire from receptacle or MIU.
- Register
  - Warranty: 10 years

**OPTIONS**

- Sizes
  - Available for all sizes and makes of current Neptune meters
- Electronic Accessory Equipment
  - R900® Wall and Pit RF MIUs
  - R450™ Wall and Pit RF MIUs
- Data Collection Systems
  - Pocket ProReader
  - Advantage
  - CE5320
  - MRX920™
  - R900® Gateways
- Units of Measure
  - US Gallons, Cubic Feet, Imperial Gallons, Cubic Metres
- Environmental Conditions
  - Operating temperature: 32°F to 158°F (0°C to 70°C)
  - Storage temperature: -40°F to 158°F (-40°C to 70°C)
  - Operating humidity: 0 to 100%